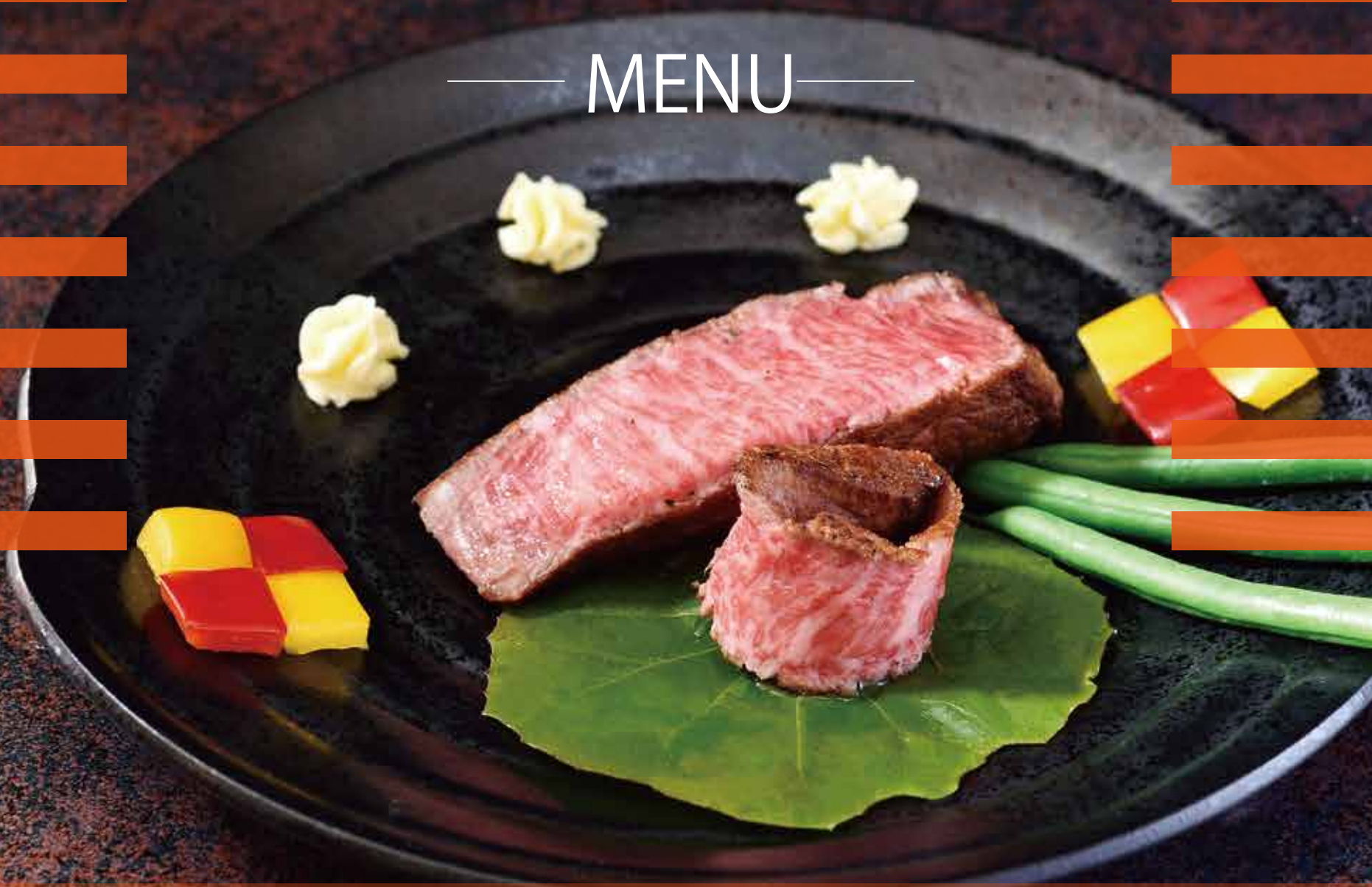


# 朱 雀

MENU



福井県の豊かな自然の恵みを大切に、お料理に心をこめる





# Wakasa Beef from Fukui Prefecture

福井県の若狭牛



"This is Fukui's pride, the branded beef 'Wakasa beef.' Please savor the distinctive taste of our premium 'A5 rank' steak."

At sujaku, we proudly offer our customers carefully selected, high-quality, and rare "Wakasa beef." Please savor the rich flavor and melt-in-your-mouth texture.

福井が誇るブランド牛「若狭牛」です。最高級「A5ランク」のステーキ自信の味をご賞味ください。  
朱雀では質の高い希少価値の「若狭牛」を厳選した仕入れでお客様にご提供しています。  
風味が良くとろける舌ざわりをご堪能ください。



The "Three-Star Wakasa Beef" produced by dedicated farmers is characterized by a refined texture, with delicate marbling that creates a fine and elegant mouthfeel."

「三ツ星若狭牛」生産者が丹精込めて温和に育てた肉質は「さし」が蜜ででき細く上品な食感です



若狭牛特選ステーキ

## "Wakasa beef special selection steak"

ステーキはポタージュスープ、ライスを+¥650でセットいたします。  
Potage soup and rice are available for 650 yen.

■ Beef fillet Steak (Grade A) ..... ¥14,000

(300g) With salad 若狭牛ヒレステーキ(A) サラダ付

■ Beef fillet Steak set ..... ¥7,800

(150g) Comes with potage soup, salad, and rice

若狭牛ヒレステーキセット ポタージュスープ、サラダ、ライス付

■ Beef fillet Steak (Grade B) ..... ¥10,500

(200g) With salad 若狭牛ヒレステーキ(A) サラダ付 うち消費税 955円

■ Beef fillet Steak set meal ..... ¥7,000

(130g) Comes with salad, rice, and miso soup

若狭牛ヒレステーキ定食 サラダ、御飯、味噌汁付

※Our restaurant is designated for Wakasa beef, but depending on the availability of our supplies, we may also use branded beef from various regions across the country.



## Obento お弁当

### ■ Sujaku Bento ..... ¥2,500

Sashimi/simmered dish/ shrimp fry/one pork cutlet/rice/and miso soup/included.

朱雀弁当 お造り、炊き合わせ、エビフライ、ヒレカツ1枚、御飯、味噌汁付

### ■ Makunouchi Bento ..... ¥1,540

Simmered dishes/fried food/salad/rice/and miso soup/included.

幕の内弁当 炊き合わせ、揚げ物、サラダ、御飯、味噌汁付

## Set Menu 定食メニュー

### ■ Sashimi set meal ..... ¥2,650

Simmered dishes/side dish/miso soup/rice/and dessert.

お造り定食 炊き合わせ、小鉢、味噌汁、御飯、デザート付

### ■ Beef Cutlet set meal ..... ¥4,600

salad/miso soup/rice.

ビーフカツ定食 サラダ、味噌汁、御飯付

### ■ Grilled meat set meal ..... ¥2,000

salad/miso soup/rice

焼肉定食 サラダ、味噌汁、御飯付

### ■ Hamburg steak set meal ..... ¥1,650

salad/miso soup/rice

ハンバーグ定食 サラダ、味噌汁、御飯付

### ■ Fillet cutlet set meal (3 pieces) ..... ¥1,980

salad/side dish/miso soup/rice

ヒレカツ定食 (3枚) サラダ、小鉢、味噌汁、御飯付

### ■ Shrimp fry set meal (2 pieces) ..... ¥2,420

salad/side dish/miso soup/rice

エビフライ定食 (2尾) サラダ、小鉢、味噌汁、御飯付

### ■ Pork loin cutlet set meal ..... ¥1,980

salad/side dish/miso soup/rice

豚ロースカツ定食 サラダ、小鉢、味噌汁、御飯付

## Donburi / A la carte menu どんぶり・単品メニュー

### ■ Seafood bowl ..... ¥1,980

small dish /miso soup

海鮮丼 小鉢、味噌汁付

### ■ Sashimi ..... ¥1,800

お造り

### ■ Sauce Cutlet Rice bowl ..... ¥1,210

small dish/miso soup

ソースカツ丼 小鉢、味噌汁付

### ■ Egg cutlet bowl ..... ¥1,320

small dish/miso soup

卵とじカツ丼 小鉢、味噌汁付

### ■ Pork steak with salad ..... ¥1,800

ポークステーキ サラダ付

### ■ Hamburg steak with salad ..... ¥1,500

ハンバーグステーキ サラダ付



Suzaku Bento



Sashimi set meal



Fillet cutlet set meal



Shrimp fry set meal



Seafood bowl



## Drink お飲物

- Blended Coffee ..... ¥500  
ブレンドコーヒー
- Large Bottle of Beer ..... ¥800  
瓶ビール (大)
- Draft Beer (Medium-Sized Mug) ..... ¥850  
生ビール (中ジョッキ)
- Asahi Draft Beer in a Glass ..... ¥600  
グラスビール (アサヒ)
- Non-Alcoholic Beer ..... ¥600  
ノンアルコールビール
- Glass of Red Wine ..... ¥1,100  
グラス赤ワイン
- Glass of White Wine ..... ¥1,100  
グラス白ワイン
- Cola ..... ¥480  
コーラ
- Orange Juice ..... ¥500  
オレンジジュース
- Oolong Tea ..... ¥500  
ウーロン茶

## Salad & Soup サラダ&スープ

- Vegetable Salad ..... ¥980  
野菜サラダ
- Potage Soup ..... ¥600  
ポタージュスープ
- Curry Rice ..... ¥1,000  
カレーライス
- Cutlet Curry ..... ¥1,400  
カツカレー



Cutlet Curry

## What is Wakasa beef?

It is a black-haired cattle that has been raised in agriculture for over 1200 years from now. Until modern times, farmers have devoted deep affection and painstaking care to its upbringing. This is the highest quality Japanese beef certified by strict standards. The marbled meat is extremely tender, melting in the mouth due to its exceptional quality. Those with particularly high levels of oleic acid, said to enhance flavor, are awarded the highest rank with a three-star rating.



In Fukui Prefecture, there is abundant nature with sea, countryside, and mountains, and the agricultural and marine products nurtured within it are all top-quality ingredients. We pay particular attention to ingredients with excellent flavor and freshness, carefully selecting and sourcing meat, fish, rice, and more. When it comes to premium dining, "Wakasa beef" is synonymous with Suzaku. We handle the highest grade "A5 rank," delivering steaks made from the high-quality and rare "Wakasa beef." Please savor the delightful aroma and the melt-in-your-mouth tenderness of our exquisite Wakasa beef steak.

## Store Information

Address / 252-14 Shimohyogo, Sakai-machi, Sakai City, Fukui Prefecture 919-0527

TEL / 0776-72-0143

Business Hours: / 11:00 AM to 2:30 PM, 5:00 PM to 8:00 PM (Last Order: 7:30 PM)

Closed / Every Wednesday, and one Tuesday per month

Parking / 60 spaces for passenger cars, 2 spaces for tourist buses